

General Product Information:

ROXUL® products are mineral wool fibre insulations made from basalt rock and slag. This combination results in a non-combustible product with a melting point of approximately 2150°F (1177°C), which gives it excellent fire resistance properties. ROXUL mineral wool is a water repellent yet vapour permeable material.

Description & Common Applications:

The ComfortBoard™ IS product is a rigid mineral wool insulation sheathing board that is non-combustible, water repellent, fire resistant and sound absorbent. This product is exterior non-structural insulation sheathing for high performance residential wall systems.

Compliance and Performance:

ASTM C 612	Mineral Fiber Block and Board Thermal Insulation	Type IVB, Complies
CAN/ULC –S702	Mineral Fibre Thermal Insulation for Buildings	Type 1, Complies

Fire Performance:

ASTM E 136	Behaviour of Materials at 750°C (1382°F)	Non-Combustible
CAN/ULC S114	Test for Non-Combustibility	Non-Combustible
ASTM E 84(UL 723)	Surface Burning Characteristics	Flame Spread = 5
		Smoke Developed = 10
		Flame Spread = 5
		Smoke Developed = 10
CAN/ULC S102	Surface Burning Characteristics	

Moisture Resistance:

ASTM C 1104	Moisture Sorption	0.05%
-------------	-------------------	-------

Water Vapour Permeance:

ASTM E 96	Water Vapour Transmission, Desiccant Method	1768 ng/Pa.s.m ² (30.9 perm)
-----------	---	---

Fungi Resistance

ASTM C1338	Determination of Fungi Resistance	Passed
------------	-----------------------------------	--------

Thermal Resistance:

ASTM C 518 (C 177)	R-value/inch @ 75°F	4.0 hr.ft ² .F/Btu***
	RSI value/25.4 mm @ 24°C	0.72 m ² K/W

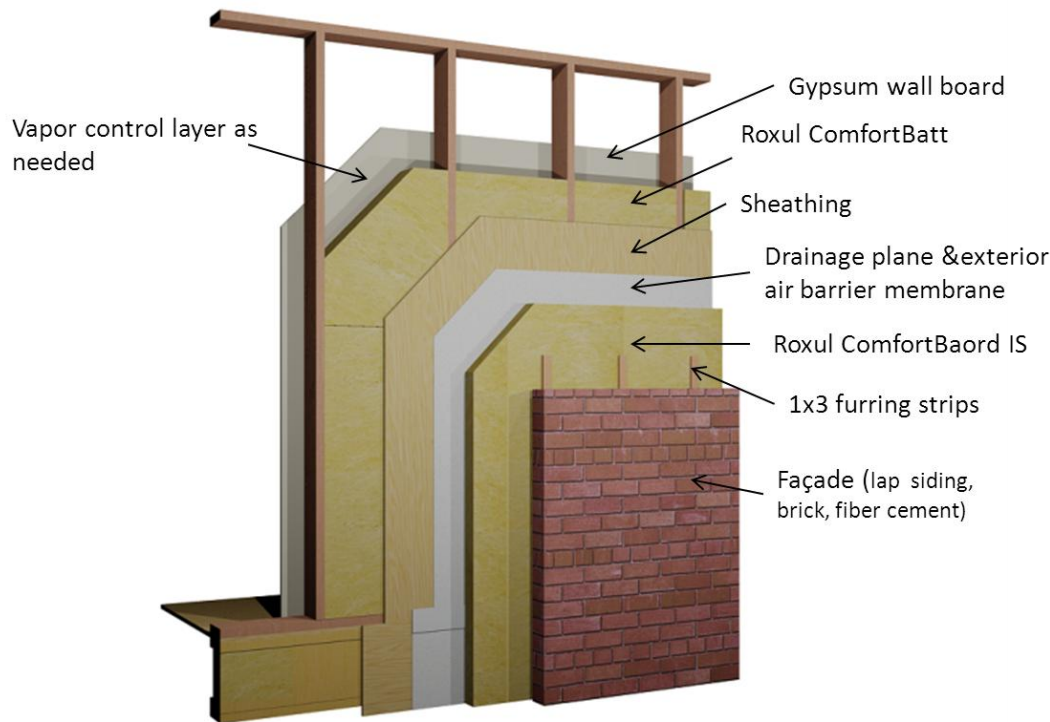
Corrosive Resistance:

ASTM C 665	Corrosiveness to Steel	Pass
ASTM C 795 ****	Stainless Steel Stress Corrosion Specification as per Test Methods C871 and C692: U.S. Nuclear Regulatory Commission, Reg. Guide #1.36: U.S. Military Specifications MIL-I-24244 (all versions including B and C)	Conforms

Acoustical Performance

ASTM C423 CO-EFFICIENTS AT FREQUENCIES							
Thickness	125 Hz	250 Hz	500 Hz	1000 Hz	2000 Hz	4000 Hz	NRC
1.5"	0.21	0.64	0.92	1.00	0.95	1.01	0.90
2.0"	0.43	0.78	0.90	0.97	0.97	1.00	0.90
3.0"	0.75	0.82	0.89	0.94	1.00	1.00	0.90

*MASTER FORMAT 1995 EDITION **MASTER FORMAT 2004 EDITION
*** at the time of manufacturing



Compressive Strength:

ASTM C 165	at 10%	743 psf (35.6 kPa)
	at 25%	1269 psf (60.8 kPa)

Density:

ASTM C 612-00 – Actual	8.0 lbs/ft ³	128 kg/m ³
------------------------	-------------------------	-----------------------

Dimensions:

24" (width) x 48" (length)
 610 mm x 1219 mm

36" (width) x 48" (length)
 610 mm x 1219 mm

48" (width) x 96" (length)
 1219 mm x 2438 mm

Thickness:

Product is available in 1.25" 1.5" 2" 3"
 For additional sizes, please contact our customer service representatives.

Key Application Qualifiers:

- Good compressive strength
- Low moisture sorption
- Durability
- Fire resistance
- Excellent thermal resistance
- Non-corrosive
- Chemically inert
- CFC and HCFC free product and process
- Made from natural & recycled materials

Other ROXUL Products:

Please consult ROXUL for all your insulation needs. We have an extensive range of products for all applications from pipe insulation to commercial products to residential batts. ROXUL invites all inquiries and will act promptly to service all of your requirements.

Note:

As ROXUL Inc. has no control over installation design and workmanship, accessory materials or application conditions, ROXUL Inc. does not warrant the performance or results of any installation containing ROXUL Inc's products. ROXUL Inc's overall liability and the remedies available are limited by the general terms and conditions of sale. This warranty is in lieu of all other warranties and conditions expressed or implied, including the warranties of merchantability and fitness for a particular purpose.